



MODU-LOC
FENCE RENTALS

ANYTIME. ANYWHERE.

EVENTS CATALOGUE

1-800-522-8371
www.moduloc.ca



CORPORATE

STRONG – DEPENDABLE – PROFESSIONAL

Modu-Loc's commitment is simple – backed by an outstanding team, we provide attractive, quality site containment solutions to keep our customers and their sites safe and protected. **Anytime. Anywhere.**

With multiple locations across Canada providing nationwide coverage, we have been servicing our customers in **special events, construction, retail and the municipal sector** since 1996. With over 2.5 million feet of fence in inventory, Modu-Loc is well-equipped to handle events of all sizes - from small, local festivals to significant, large-scale special events.

Organizations such as the RCMP and CSIS have trusted Modu-Loc fence products to provide security at high-profile events, including the Vancouver Olympic Games, G20 Summit, APEC Conference and President's Cup. Modu-Loc products also were used to secure more than 60 sites for the TORONTO 2015 Pan Am / Parapan Am Games.

OUTSTANDING CUSTOMER SERVICE

All things considered, our customer service is what truly differentiates Modu-Loc from the competition. Our field specialists - known as **Modu-Loc 'Fence Guys'** - are trained professionals who understand the security, accessibility and image requirements of our customers. We provide emergency response, a quality product, and expert recommendations concerning fence placement and crowd control.

THE MODU-LOC FENCE SYSTEM

The **Modu-Loc fence system meets and exceeds the requirements for site safety and security.** Our standard green fence panels are 10 feet in length and available in heights of 4, 6, and 8 feet. Modu-Loc fence panels are professionally engineered for strength and durability to provide the highest degree of security in the rental fence industry.

The fence panel's frame consists of structural steel square tubing and the interior panel design incorporates heavy gauge welded wire mesh. Our superior components - including longer caps, bases, and base extensions - work together to ensure optimal fence line integrity.

Modu-Loc is the **industry leader in innovation.** We have developed a number of leading-edge products to complement our fencing systems. Our continued focus on innovation ensures that we are able to proactively address the needs of our customers.

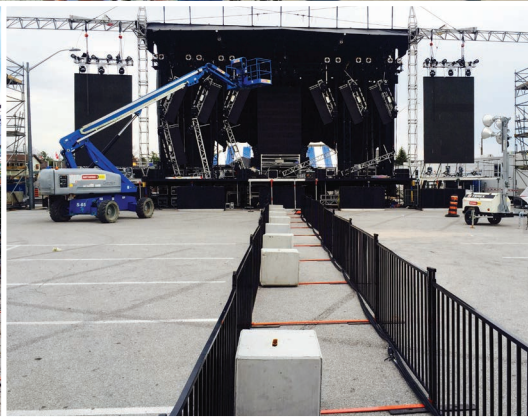
BUILDING A PARTNERSHIP

No matter the project, our approach is always to work closely with our clients to identify site requirements and ensure that all criteria are met. For us, success lies in delivering peace of mind to our customers.

At Modu-Loc Fence Rentals we are known for the strength and durability of our fencing products, and the unparalleled service and expertise we provide to our customers. **Call 1.800.522.8371** to be directed to the nearest regional office.



EVENTS



Modu-Loc Fence Rentals is the leader in crowd control for the special events industry. The Modu-Loc system ensures security, privacy and visual appeal to meet the needs of any type or size of event. Modu-Loc's experienced delivery and installation specialists - the 'Fence Guys' - have an in-depth understanding of the complexities and demands of event production, enabling them to provide recommendations for optimum crowd control and security.

SECURITY – Modu-Loc fence panels with breach-deterrent systems – security clamps and anti-climb rails

SERVICE – flexible schedules to provide on-site assistance and meet the logistical demands of the event industry

SUPERIOR INSTALLATION SYSTEMS – solutions for windy conditions, uneven terrain, high security and restricted access

ATTRACTIVE CROWD CONTROL OPTIONS – premium black VIP fence, silver crowd control barriers and white picket panels

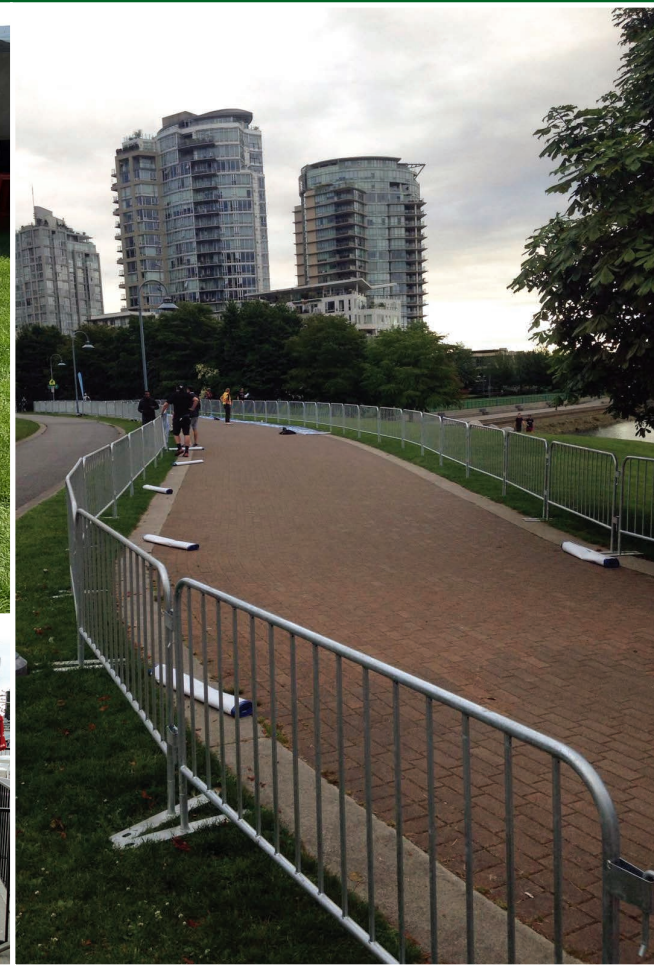
CONTROLLED ACCESS POINTS – multiple gate systems and styles for secure personnel and vehicle access

SIGNAGE – fence panels allow for quick and easy sign installation; excellent solution for posted directions and sponsorship opportunities

BRANDED SCRIM – increased exposure, privacy and sponsorship opportunities

PRIVACY SCREENING – provides both privacy and security

CROWD CONTROL



For event customers who need something a little more special than our standard green fence, Modu-Loc offers a range of high-quality, visually appealing crowd control options.

BLACK VIP FENCE – our premium black fence is an attractive option that is appropriate for the most high-end events. At 40" tall by 8' long, Modu-Loc's black VIP panels are suitable for fencing in beer gardens, creating queues or enclosing exhibits.

SILVER CROWD BARRIER – galvanized steel crowd control barriers are ideal for events requiring an attractive yet effective option for managing pedestrian traffic. Our silver crowd barrier is 42" tall with 5/8" thick vertical pickets.

WHITE PICKET FENCE – a premium option for special events and brand activations. Made of high-quality PVC, our white picket fence offers improved longevity versus traditional wood panels. At 36" tall, it's ideal for securing patios, exhibits or VIP areas.



GATE ASSEMBLIES

Modu-Loc fence systems include pedestrian and vehicle access gates. Our gates can be placed anywhere in the fence line, allowing for effective control.

PERSONNEL AND VEHICLE ACCESS – options include sliding gates, integrated man-door panels, and hinged swing gates

CUSTOMIZABLE SYSTEMS – various widths available

VISIBLE ACCESS – integrated hi-vis gate systems that stand out from the fence line

INCREASE SECURITY – with controlled access points



STAGE BARRICADE

Modu-Loc's stage barricade is ideal for containing large crowds at the outskirts of a stage or any other area to which access must be restricted.

OPTIMUM CROWD CONTROL – heavy-duty step provides elevation for security staff, allowing access to front of crowd for maximum control

ENHANCED EVENT SECURITY by effectively restricting access to controlled areas

WEIGHT – 123 lbs

COLOUR – available in grey or black



FENCE SCREENING

Modu-Loc offers several different styles of screen to suit a variety of requirements and applications. All Modu-Loc screening is water repellent, UV resistant, and controls dust and debris.

PRIVACY SCREENING – Ideal for special events or any area where limiting visual access or containing dust and debris is required.

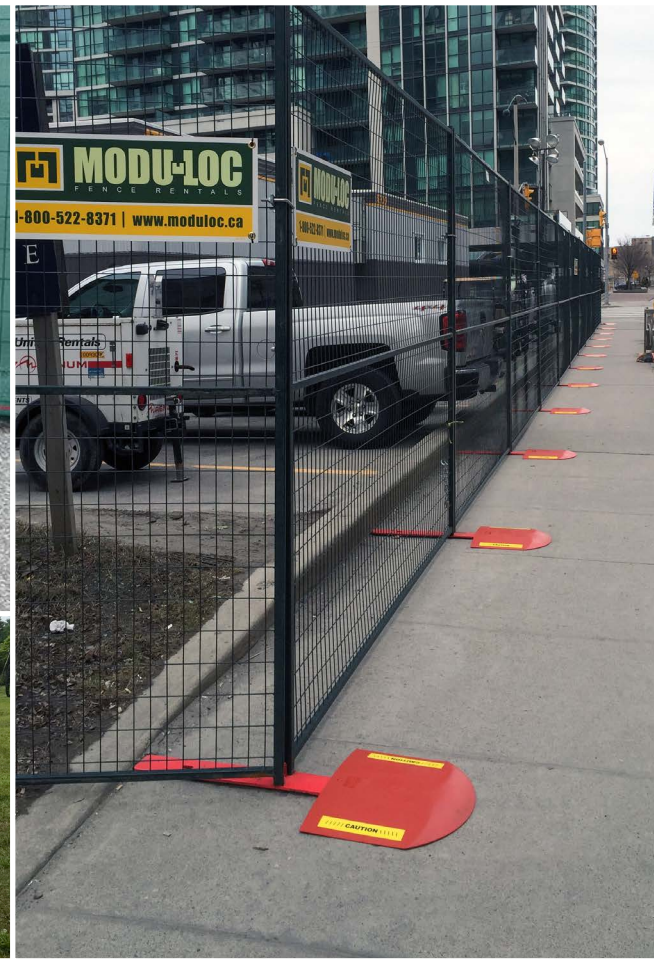
- Up to 98% opacity
- Can be cut to length without running
- Black and green carried in stock; other colours available as special orders

BRANDED SCREENING - Our printed screening is ideal for construction and event customers who are looking to increase their brand exposure or offer sponsorship opportunities.

- 80% - 90% opacity
- Customizable
- Various colour options



SAFETY PRODUCTS



Modu-Loc offers a wide range of quality safety products to provide greater protection for event staff, guests and the public. All accessories are available for rent or purchase.

TRAFFIC CONES – 28" tall with high-intensity reflective tape. Made of durable yet flexible PVC with a black, weighted base for stability.

TRAFFIC CONE BAR – retractable from 98" to 51". Lightweight and convenient, it loops over the top of cones for easy set-up. Ideal for a variety of pedestrian applications.

SAFETY RAMPS – slide onto fence bases to provide a smooth transition for wheelchairs and strollers, and to help reduce pedestrian tripping hazards.

DELINEATORS – 42" - 45" tall and available in a variety of styles with different handles. Loopers and T-tops come with a weighted black base.

DELINEATOR BOOTS – all of our delineators can be outfitted with a metal boot and attached to Modu-Loc fence bases, further reducing tripping hazards and preventing delineators from being knocked over.

SECURITY

Modu-Loc Fence Rentals has developed innovative security components and gate systems that work together to form a comprehensive breach deterrent system, creating the most secure temporary fence solution available.

SECURITY CLAMPS cannot be removed without tools and access to the back of the locking mechanism from inside the fence line.

- **Improve security** – as the fence panels cannot be disconnected
- **Increase stability** – with a third connection point for the panels

SECURITY RAILS are a strong visual deterrent, and prove physically challenging to breach.

- **Increase security** – by keeping intruders out of the site

HIGH-SECURITY SYSTEMS - armed with data from rigorous third-party engineering tests, we have developed high-security site containment systems to answer the needs of high-profile events requiring maximum protection and controlled site access.

These high-security systems are categorized into two tiers, depending on the security requirements of the site:

- **Tier 1** - our Tier 1 system is comprised of 8' standard green panels mounted on to concrete jersey barriers. Stability braces, security clamps and security rails are added to improve security and stability of the system.
- **Tier 2** – our Tier 2 system combines our standard green fence panels with security clamps and our concrete block ballast system. Our ballast system is comprised of heavy concrete blocks and wind braces spaced at 20' intervals along the fenceline, and is engineered to withstand high winds.

ENHANCED INSTALLATION

Modu-Loc Fence Rentals offers superior installation systems that adapt to the most demanding conditions – uneven terrain, high winds and roadside applications. Modu-Loc Fence Guys are trained to assess areas of concern and make recommendations for the right accessories to accommodate every site, ensuring optimal support and stability.

ADAPTABLE INSTALLATION using longer caps, triangular bracing, and base extensions to accommodate challenging sites.

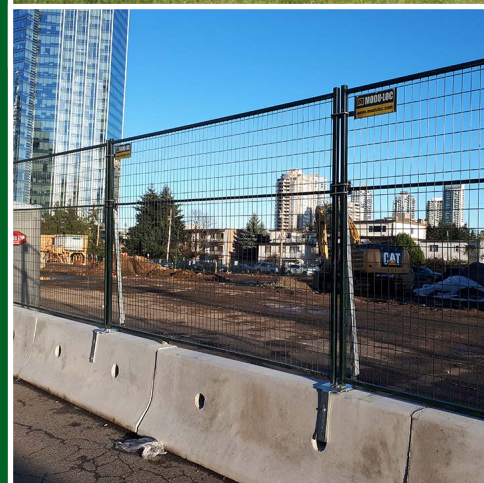
- **Achieve perimeter security and stability, even on uneven terrain**

HIGH WIND INSTALLATION including wind braces and ballast system.

- **Reduce costs** associated with damage to fence or property
- **Maintain stability** – required when hanging banners or scrim on fence

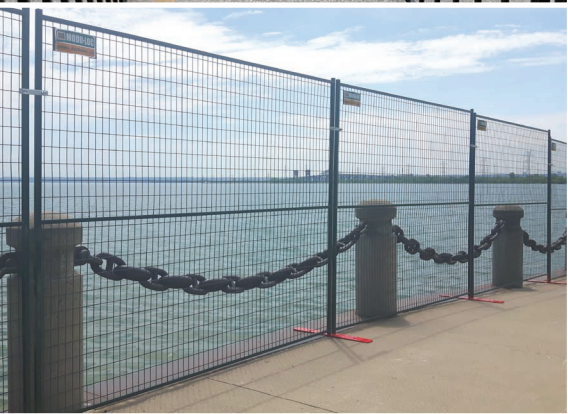
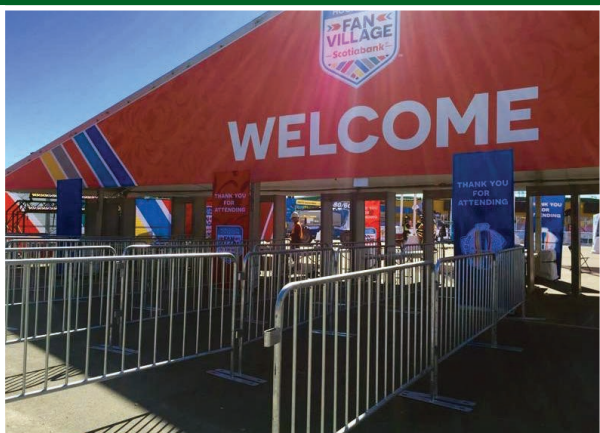
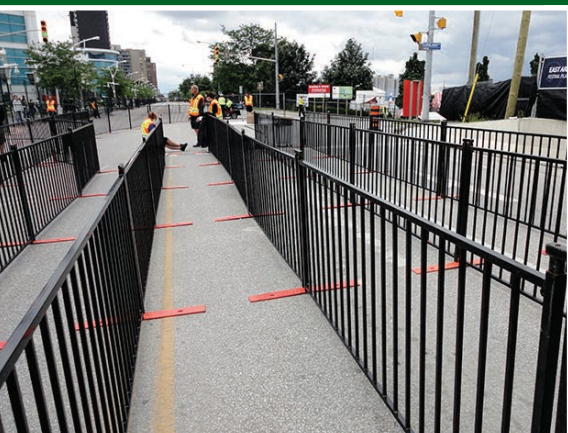
CONCRETE BARRIER INSTALLATION with saddle mounts or bolted plates.

- **Strong breach deterrent** – visually and physically
- **Roadside installation solution** – ensure safety of event attendees on sites near busy roadways
- **Reduces installation time and costs** over other mounted barrier systems
- **Visually appealing** compared to traditional roadside barriers





16 locations throughout Canada offering nationwide service



1-800-522-8371 | www.moduloc.ca